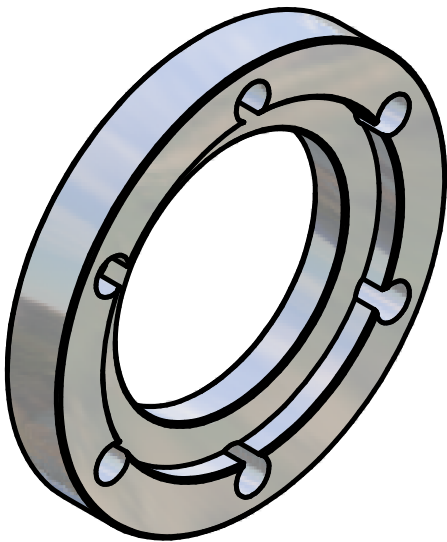
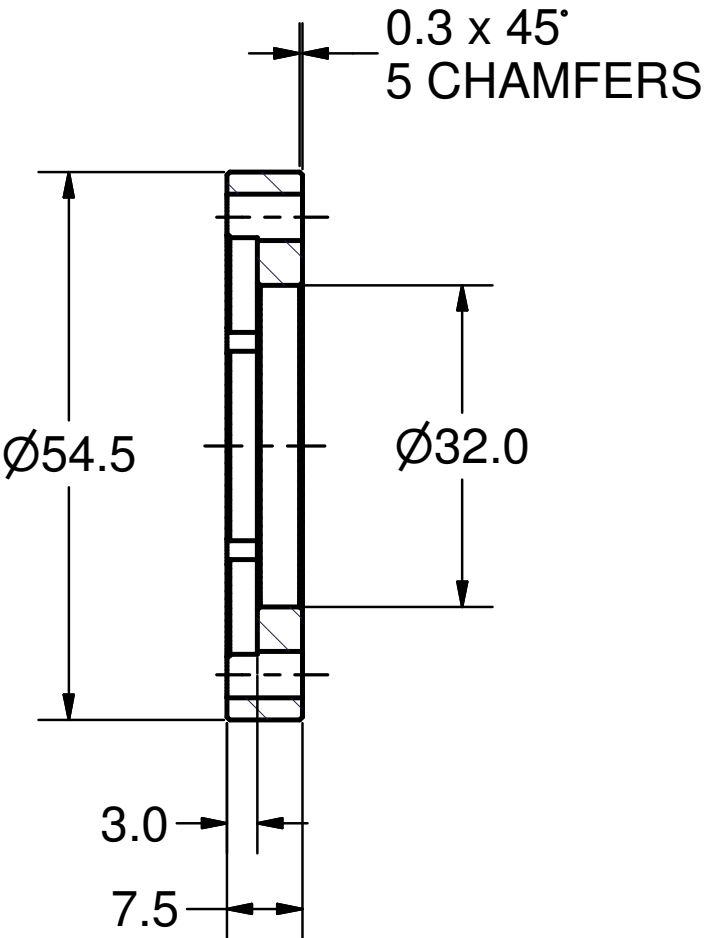
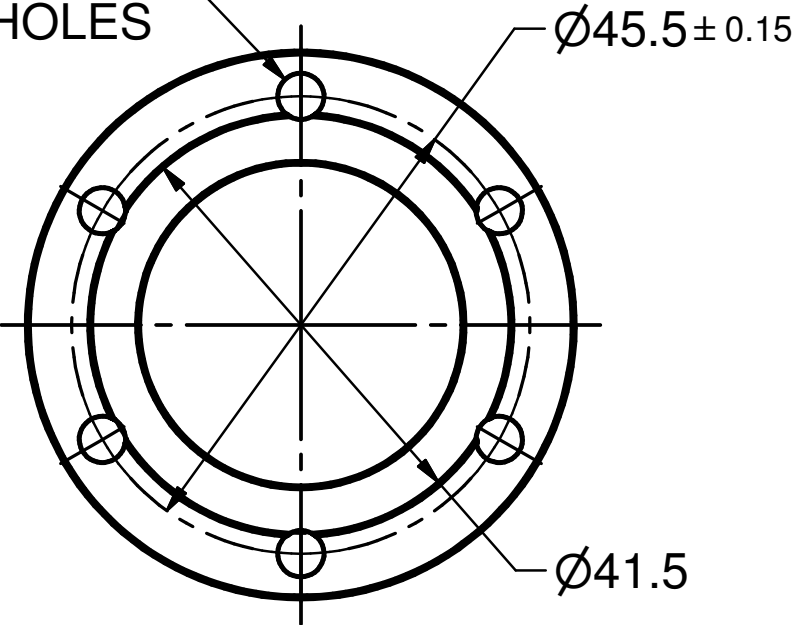




Ø4.6 THRU
6 HOLES



Issued all design changes as Rev C (TIO) - 4/19/07 - SAB

										Rev. C	
								Scale : 1:1		mat: Stainless Steel, 304	
								ASSEMBLY : 75 kW CW Input Coupler			
					Date	Name	DESIGNATION : CLAMP FLANGE				
				Drawn	10/5/04	Churanov					
				Checked	08-06-05	VM					
				Standard							
							100.700.004				1
											A4
State	Changes	Date	Name								

